

Warwickshire Police

Rugby Safer Neighbourhood Team (SNT)

February 2021 News



Welcome

Welcome to February's issue of our newsletter, we hope it finds you well. Rugby Safer Neighbourhood Team have increased patrols within the communities during this lockdown, providing advice and reassurance. It has been well received by residents. We encourage everyone to stay at home as requested and stay safe during this time it may be a good idea to assess the security of your property. As usual this month's issue will have useful links in order for enquiries to be dealt with by the most appropriate service. Crime statistics can be found on Warwickshire Police website via link <https://www.ourwatch.org.uk/crime-map>

 HM Government 

**STAY HOME
PROTECT THE NHS
SAVE LIVES**

The new COVID-19 variant is spreading fast. We all need to play our part to stop the spread.

STAY HOME ▶ PROTECT THE NHS ▶ SAVE LIVES



HM Government



ENGLAND LOCKDOWN STAY AT HOME

THE NEW STRAIN OF CORONAVIRUS IS SPREADING FAST.
WE ALL NEED TO PLAY OUR PART TO STOP THE SPREAD.

▶ LEAVING HOME

You must not leave, or be outside of your home or garden, except for a very limited set of exemptions e.g. to shop for basic necessities, exercise, go to work if you cannot do so from home, or to escape risk of harm.

▶ MEETING OTHERS

You cannot leave your home to meet socially with anyone, except with your household or support bubble (if eligible to form one). Stay 2 metres apart from anyone not in your household or support bubble.

▶ EXERCISE

You may exercise on your own, with your household or support bubble, or with one person from another household (when on your own). Stay 2 metres apart from anyone not in your household or support bubble.

▶ BARS, PUBS AND RESTAURANTS

Hospitality closed aside from sales by takeaway (until 11pm), click-and-collect, drive-through or delivery. Alcohol cannot be purchased through takeaway or click-and-collect from hospitality venues.

▶ RETAIL

Essential shops can open. Non-essential retail must close and can only run click-and-collect and delivery.

▶ WORK AND BUSINESS

Everyone must work from home unless they are unable to do so.

▶ EDUCATION

Early years settings open. Primary and secondary schools and colleges move to remote provision except for vulnerable children and children of critical workers. Most university students to move to remote learning.

▶ LEISURE AND SPORTING FACILITIES

Closed, with limited exceptions.

▶ ACCOMMODATION

Closed, with limited exceptions.

▶ PERSONAL CARE

Closed.

▶ ENTERTAINMENT

Closed.

▶ OVERNIGHT STAYS

You must not stay overnight away from home. Limited exceptions apply e.g. to stay with your support bubble.

▶ WEDDINGS AND FUNERALS

Funerals of up to 30 people permitted. Weddings up to 6 people permitted in exceptional circumstances. Wakes and other linked ceremonial events of up to 6 permitted.

▶ PLACES OF WORSHIP

Places of worship can remain open and communal worship is permitted, but you must not mix with those outside your household or support bubble.

▶ TRAVELLING

You must stay at home. If you do leave home for a very limited set of exemptions, you should stay local in the village, town, or part of the city where you live where possible. Do not travel abroad unless an exemption applies.

▶ CLINICALLY EXTREMELY VULNERABLE

Shielding reintroduced across England. You should not travel to work, school, college or university and should limit the time you spend outside the home. You should only go out for medical appointments, exercise or if it is essential.

▶ CARE HOME VISITS

Visits can take place with arrangements such as substantial screens, visiting pods, or behind windows. Close-contact indoor visits are not allowed. No visits will be permitted in the event of an outbreak but end of life visits are permitted in all circumstances.

STAY HOME ▶ PROTECT THE NHS ▶ SAVE LIVES

For more information go to:
[gov.uk/coronavirus](https://www.gov.uk/coronavirus)

Community Engagement.

A high court eviction notice was carried out on Charlotte Street on the Benn Ward assisted by Town West officers and Taser support. A number of weapons and counterfeit cigarettes were seized. PC Matt Birch of Town West stated “The removal of these weapons from an individual with a total dis-regard to others is a positive action for the community”



Rugby Rural South & Central PCSOs have been out in all weathers on foot patrols of the rural villages and surrounding areas engaging with people taking exercise and fellow essential workers and animals.



Rugby SNT were conducting a rural speed check and noted the difference in the visibility of two horse riders that passed by. Wanting to promote road safety and in particular being safe by being seen the pictures were posted on Rugby Police Facebook.



The post attracted 102,481 views and 165 comments along with some great pictures shared from the equestrian community on how they are supporting road safety in Warwickshire.



Information.



Around your farm yard, in your barns and outbuildings there is valuable equipment that will appeal to thieves e.g. power tools, quad bikes, machinery and diesel. Isolated buildings, machinery and livestock present the greatest risk.

Tips to consider

Farm buildings

- Make sure valuable equipment is stored in a secure building behind a strong locked door, or use a metal cage and keep it locked when unattended.
- When not in use, lock doors to outbuildings at all times. If equipment is in a barn or rick yard secure it with gates, an alarm or security beams.
- Use locks that comply with the british standards, good quality locking bars and high security padlocks.
- Windows can be an open invitation to thieves - protect them with metal bars or grilles.

- Improve security for your diesel and fertiliser.

Farmhouses

Farmhouses are often in isolated locations and can be vulnerable to crime if not properly secured.

- Make sure that doors are kept locked - even when you are on the premises.
- Fit locks to all ground floor windows.
- Make sure doors and windows are well maintained and in a good state of repair.
- Fit mortice deadlocks that comply with the british standards to all external doors and reinforce with locking bolts.
- Investing in timers that turn lights on and off inside the house if you go out at night and consider installing security lighting outside.
- Consider fitting an alarm.

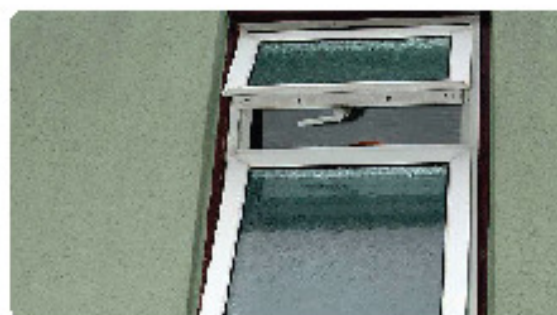


Advice on
Home security

Home security is the best way to reduce your chances of being burgled. A lot of burglaries are spur of the moment, as a burglar may see an open window or other easy point of entry and take their chance.

Tips to consider

- If you are installing new doors and windows get ones that are certified to British Standard (PAS 24-1).
- Window locks especially on older windows will help stop people getting in.
- Securely lock all doors and windows before leaving the house. It's easy to forget when you're in a hurry, but it's the simplest way for a burglar to enter your home.
- Never leave keys anywhere near the front door, including your letterbox; burglars know where to look.
- A home that looks empty is far more likely to be targeted by a burglar, so it's worth making sure your home looks occupied.



- Use automatic timer-switches to turn on a light and perhaps a radio when it goes dark, even if you are just out for a couple of hours.



Crime prevention advice on
Caravan theft

Each year around 1,400 caravans are stolen in the UK. Very few are ever returned to their original owner, partly because they can 'disappear' into an illicit network of buyers and sellers, and partly because, when a caravan is found by the police, all identifying marks have been removed - It is not uncommon for thieves to grind out the VIN number from the caravan windows.

Caravan crime

It is not just new caravans that are prime targets for being stolen; in fact caravans that are about two or three years old that are more likely to be stolen.

Thefts occur all year round; historically most thefts occur either from home (or other private residences) or commercial storage sites, but occasionally thefts will occur from caravan sites (seasonal pitches or storage areas), dealerships or repairers (whilst awaiting service or repair) or car parks and lay-bys.

Many caravan security devices are available on the market, from hitchlocks to steady locks, from alarms to wheelclamps. There are also alarms and sophisticated tracking systems available costing hundreds of pounds. Please see the below link for more details.

For a comprehensive guide to caravan security please visit www.caravanclub.co.uk/media/1022841/caravan-security-mo.pdf.

In an emergency please call 999, otherwise please call 101 (the national police non-emergency number).



www.warwickshire.police.uk



[warwickshirepolice](https://www.facebook.com/warwickshirepolice)



[@warwickpolice](https://twitter.com/warwickpolice)



[@warwickshirepolice](https://www.instagram.com/warwickshirepolice)

Don't give criminals an easy ride by leaving your car running



www.warwickshire.police.uk  [warwickshirepolice](https://www.facebook.com/warwickshirepolice)  [@warkspolice](https://twitter.com/warkspolice)  [@warwickshirepolice](https://www.instagram.com/warwickshirepolice)

Let your children know we are the good guys and will protect them.

Parents

Don't make your children scared of the police

Please don't tell your children that the police will 'look them up' or 'catch you if you are naughty'. We want children to come to us if they are scared, lost or in danger, not run away from us.



Children

The police will keep you safe

If you are in trouble, lost or scared, the police can help. We're here to catch the baddies and to protect you. Please don't be scared of us. If you see us in the street give us a wave.



www.warwickshire.police.uk  [warwickshirepolice](https://www.facebook.com/warwickshirepolice)  [@warkspolice](https://twitter.com/warkspolice)  [@warwickshirepolice](https://www.instagram.com/warwickshirepolice)

Neighbour disputes.

We would all like to live in peace with our neighbours, but unfortunately that is sometimes not how things work out. Here's what you can do if you are having problems. Unless a crime has been committed or someone is in immediate danger, the police are unlikely to intervene in neighbour disputes. However we'll put you in touch with the groups and organisations who can help.



Examples:

I'm having a dispute with a neighbour about our property boundaries.

If you can't find an amicable solution with your neighbour, we suggest seeking the advice of a solicitor to resolve this. You could also contact your bank, building society, or whoever holds your deeds, to confirm the boundaries.

The following resources may also be of use:

- The Royal Institute of Chartered Surveyors (RICS) www.rics.org
- The Land Registry www.gov.uk

I'm having a dispute with a neighbour about their CCTV camera pointing at my property

Many people are installing closed circuit television (CCTV) as a home security measure as it has proved to be an effective tool in fighting crime. Cameras used for limited household purposes are not subject to the Data Protection Act 1998.

However, if the footage covers areas beyond this, such as neighbouring streets or other properties, problems may arise. There could be issues regarding privacy and harassment if you are being recorded in your home.

In the first instance, speak to your neighbour to see if it's possible to reposition the camera so that it does not point at your property. If this is not successful, and you want to take further action, we recommend seeking legal advice from a solicitor.

- To find a local independent solicitor visit The Law Society web site www.lawsociety.org.uk

This information is provided courtesy of [Ask the Police](#)

My neighbour plays music to an excessive level

A noise complaint can be made to your local council on line.

Rugby Borough Council: www.rugby.gov.uk

If you live in a rented property or local housing then please contact your landlord or the housing association who will be able to provide relevant support and guidance.

Further advice on what to do to resolve a neighbour dispute can be obtained from the Gov.UK website www.gov.uk

This independent website also offers advice www.problemneighbours.co.uk

If you live in a rented property or local housing then please contact your landlord or the housing association who will be able to provide relevant support and guidance.





Contact us!

- ✉ Rugby Rural South & Central. rrc.snt@warwickshire.pnn.police.uk
- ✉ Rugby Rural North. rrn.snt@warwickshire.pnn.police.uk
- ✉ Rugby Town North. rtn.snt@warwickshire.pnn.police.uk
- ✉ Rugby Town West. rtw.snt@warwickshire.pnn.police.uk
- ✉ Rugby Town East. rte.snt@warwickshire.pnn.police.uk
- ✉ Rugby Town Centre. rtc.snt@warwickshire.pnn.police.uk



Rugby Police



@RugbyCops

☎ **999** – In an Emergency

☎ **101** – To report a Crime

“No copyright infringement is intended”

